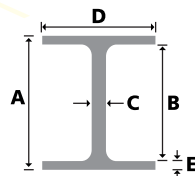
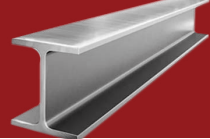


Dimensiones pulgadas	Peso aprox.		Dimensiones en mm.				
	lb/ft	kg/mt	Peralte Exterior A	Peralte Interior B	Espesor Peralte C	Ancho Patin D	Espesor Patin E
4 X 4	13	19.3	106	88	7.1	103	8.8
5 X 5	16	23.8	127	109	6.1	127	9.1
5 X 5	19	28.3	131	109	6.9	128	10.9
6 X 4	8.5	12.6	152	140	4.5	100	4.6
6 X 4	9	13.5	150	139	4.3	100	5.5
6 X 4	12	17.9	153	138	5.8	102	7.1
6 X 4	16	23.8	160	139	6.6	102	10.3
6 X 6	15	22.3	152	139	5.8	152	6.6
6 X 6	20	29.8	157	138	6.6	153	9.3
6 X 6	25	37.2	162	139	8.1	154	11.6
8 X 4	10	14.9	200	190	4.3	100	5.2
8 X 4	13	19.3	203	190	5.8	102	6.5
8 X 4	15	22.3	206	190	6.2	102	8.0
8 X 5 1/4"	18	26.8	207	190	5.8	133	8.4
8 X 5 1/4"	21	31.3	210	190	6.4	134	10.2
8 X 6 1/2"	24	35.7	201	181	6.2	201	10.2
8 X 6 1/2"	28	41.7	205	181	7.2	205	11.8
8 X 8	31	46.1	203	181	7.2	203	11.0
8 X 8	35	52.1	206	181	7.9	204	12.6
8 X 8	40	59.5	210	182	9.1	205	14.2
8 X 8	48	71.4	216	181	10.2	206	17.4
8 X 8	58	86.3	222	181	13.0	209	20.6
8 X 8	67	99.7	229	182	14.5	210	23.7
10 X 4	12	17.9	251	240	4.8	101	5.3
10 X 4	15	22.3	254	240	5.8	102	6.9
10 X 4	17	25.3	257	240	6.1	102	8.4
10 X 4	19	28.3	260	240	6.4	102	10.0
10 X 5 3/4"	22	32.7	258	240	6.1	146	9.1
10 X 5 3/4"	26	38.7	262	240	6.6	147	11.2
10 X 5 3/4"	30	44.6	266	240	7.6	147	13.0
10 X 8	33	49.1	247	225	7.4	202	11.0
10 X 8	39	58.0	252	225	8.0	203	13.5
10 X 8	45	67.0	257	226	8.9	204	15.7
10 X 10	49	72.9	253	225	8.6	254	14.2
10 X 10	54	80.4	256	225	9.4	255	15.6

- A** Peralte Exterior
- B** Peralte Interior
- C** Espesor Peralte
- D** Ancho Patin
- E** Espesor Patin



PESOS TEÓRICOS CON UNA VARIACIÓN DE  $\pm 5\%$   
 PESO CALCULADO EN PIEZAS DE 6.00 MTS.



# VIGAS I.P.R



Dimensiones pulgadas	Peso aprox.		Dimensiones en mm.				
	lb/ ft	kg/ mt	Peralte Exterior	Peralte Interior	Espesor Peralte	Ancho Patin	Espesor Patin
			A	B	C	D	E
10 X 10	60	89.3	260	225	10.7	256	17.3
10 X 10	68	101	264	225	11.9	257	19.6
10 X 10	77	115	269	225	13.5	259	22.1
10 X 10	88	131	275	225	15.4	261	25.1
10 X 10	100	149	282	225	17.3	263	28.4
10 X 10	112	167	289	225	19.2	265	31.8
12 X 4	14	20.8	303	292	5.1	101	5.7
12 X 4	16	23.8	305	292	5.6	101	6.7
12 X 4	19	28.3	309	291	6.0	102	8.9
12 X 4	22	32.7	313	291	6.6	102	10.8
12 X 6 1/2"	26	38.7	310	291	5.8	165	9.7
12 X 6 1/2"	30	44.6	313	291	6.6	166	11.2
12 X 6 1/2"	35	52.1	317	291	7.6	167	13.2
12 X 8	40	59.5	303	277	7.5	203	13.1
12 X 8	45	67.0	306	277	8.5	204	14.6
12 X 8	50	74.4	310	277	9.4	205	16.3
12 X 10	53	78.9	306	277	8.8	254	14.6
12 X 10	58	86.3	310	277	9.1	254	16.3
12 X 12	65	96.7	308	277	9.9	305	15.4
12 X 12	72	107	311	277	10.9	306	17.0
12 X 12	79	118	314	277	11.9	307	18.7
12 X 12	87	129	318	277	13.1	308	20.6
12 X 12	96	143	323	277	14.0	309	22.9
12 X 12	106	158	327	277	15.5	310	25.1
12 X 12	120	179	333	277	18.0	313	28.1
12 X 12	136	202	341	277	20.1	315	31.8
12 X 12	152	226	348	277	22.1	317	35.6
12 X 12	170	253	356	277	24.4	319	39.6
12 X 12	190	283	365	277	26.9	322	44.1
12 X 12	210	313	374	277	30.0	325	48.3
12 X 12	230	342	382	277	32.6	328	52.6
12 X 12	252	375	392	277	36.0	332	58.0
12 X 12	279	415	400	277	38.0	335	64.0
12 X 12	305	454					
12 X 12	336	500	405	277	42.0	339	74.0

PESOS TEÓRICOS CON UNA VARIACIÓN DE  $\pm 5\%$   
 PESO CALCULADO EN PIEZAS DE 6.00 MTS.

Altura o Peralte		Peso aprox.		Patín (mm)		Alma (mm)
Pulgadas	Milímetros	lb/ft.	kg/mt.	Ancho	Espesor	
3	76.2	4.1	6.10	35.8	7	4
4	101.6	5.4	8.04	40.2	8	5
5	127.0	6.7	9.96	44.4	6	4
6	152.4	8.2	12.20	48.7	9	5
8	203.8	11.5	17.11	57.4	10	6
8	203.8	13.8	20.48	60.0	10	8
8	203.8	18.8	27.93	64.0	10	12
10	254.0	15.3	22.80	66.1	11	6
10	254.0	20.0	29.80	69.8	11	10
10	254.0	25.0	37.20	73.3	11	13
10	254.0	30.0	44.70	77.1	11	17
12	304.8	20.7	30.80	74.3	11	7
12	304.8	25.0	37.20	77.4	11	10
12	304.8	30.0	44.70	80.6	11	13

## VIGAS I.P.S.

Peralte	Patín (mm)		Alma	Peso aprox.
Pulg	mm	Ancho	mm	kg/m
3	76.2	59.23	4.3	8.48
4	101.6	67.64	4.9	11.46
5	127.0	76.30	5.4	14.88
6	152.4	84.63	5.9	18.60

## TEE DE FIERRO

Pulg.	mm	Peso aprox.	
		kg/m	kg pz.6 m
1/8 x 1	3.2 x 25.4	1.32	7.92

